



Cultural Site Sheet

Cultural site name	Cathedral of Saints Peter and Donatus
Type of site	Cathedral
Address	Piazza del Duomo 1
City	Arezzo
Contacts	+39 0575 23991 +39 0577 286300 info and booking active from Monday to Friday. Email: duomoarezzo@operalaboratori.com
Website	https://www.duomoarezzo.it/duomo-arezzo/
WCAG 2.1 compliant accessible website	NO

TESTED BY: [Handy Superabile Social Promotion Association](#) in summer 2024

Please note The following information refers to the date of verification shown at the bottom of each sheet. **The Association** is not responsible for any significant changes made by the property after the visit.

Summary

Cultural Site Sheet.....	1
Description.....	2
Arrival at the property.....	3
Private/public parking.....	3
Pathway from the car park to the entrance.....	4
Reception.....	5
Itineraries.....	6
Services.....	8
Additional elements.....	8
Toilets for guests with reduced mobility.....	9
Medical practices/healthcare facilities.....	9

Project carried out with the contribution of the





Description

The Arezzo Cathedral, dedicated to Saints Peter and Donatus, overlooks Piazza del Duomo, in front of the Bishop's Palace. This imposing Christian building, the largest in the Province of Arezzo, contains within a harmonious Gothic architecture authentic art treasures as well as very important testimonies of faith. On the left side of the cathedral is the Chapel of Our Lady of Comfort, connected to the miracle of February 15, 1796. The Chapel was built in August of the same year and was completed in 1817. Today it is the fulcrum of a strong popular devotion.

General information




Opening and closing period	Always open. It is advisable to contact the cathedral information office. Phone +39 0577 286300 info and booking, active from Monday to Friday from 08.30 to 17.30. Email: duomoarezzo@operalaboratori.com
Times	From 10.00 to 18.00. On Sundays from 1.30 pm to 6.00 pm. It is advisable to contact the cathedral information office. Phone +39 0577 286300 info and booking, active from Monday to Friday from 08.30 to 17.30. Email: duomoarezzo@operalaboratori.com
Ticket cost	6 euros
Reductions	4 euros. For any reductions or free admissions, please consult the following link https://www.duomoarezzo.it/duomo-arezzo/
Online purchase	YES
Pet access	Not detected





Arrival at the property

Private/public parking

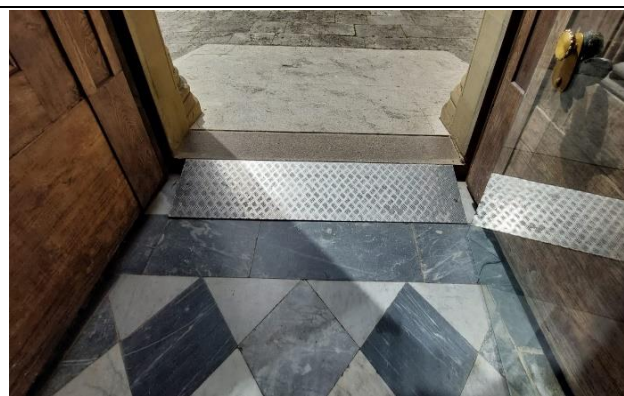
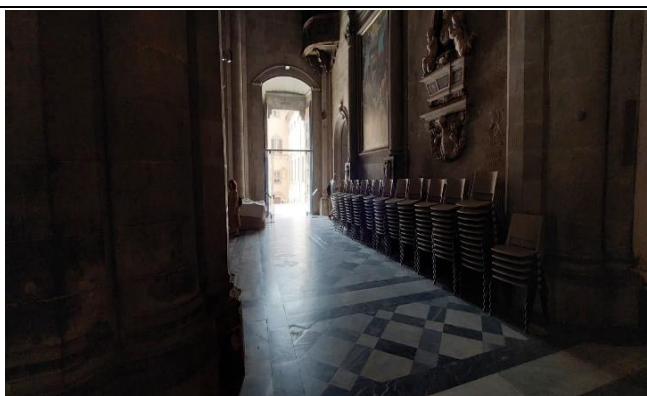
Presence of private parking	NO
Public parking nearby	YES
Type of flooring in the public car park	Stone and asphalt blocks
Presence of parking space reserved for people with disabilities	SI num.3
	
	<p>Eventual notes: People with reduced disabilities can apply for a permit for circulation and parking https://www.comune.arezzo.it/contrassegni o-invalidi-europeo or by calling the toll-free number 800-211155</p>





Pathway from the car park to the entrance

The property can be reached from the car park	flat
Distance from parking to entrance	100 meters
There are indicators and tactile maps	NO
There is an accessible entrance	YES main entrance on the right side
How to access the site	Via external ramp, length 255 cm, width over 200 cm, slope 12.50% Internal metal ramp, length 39 cm, width 170, slope 23%



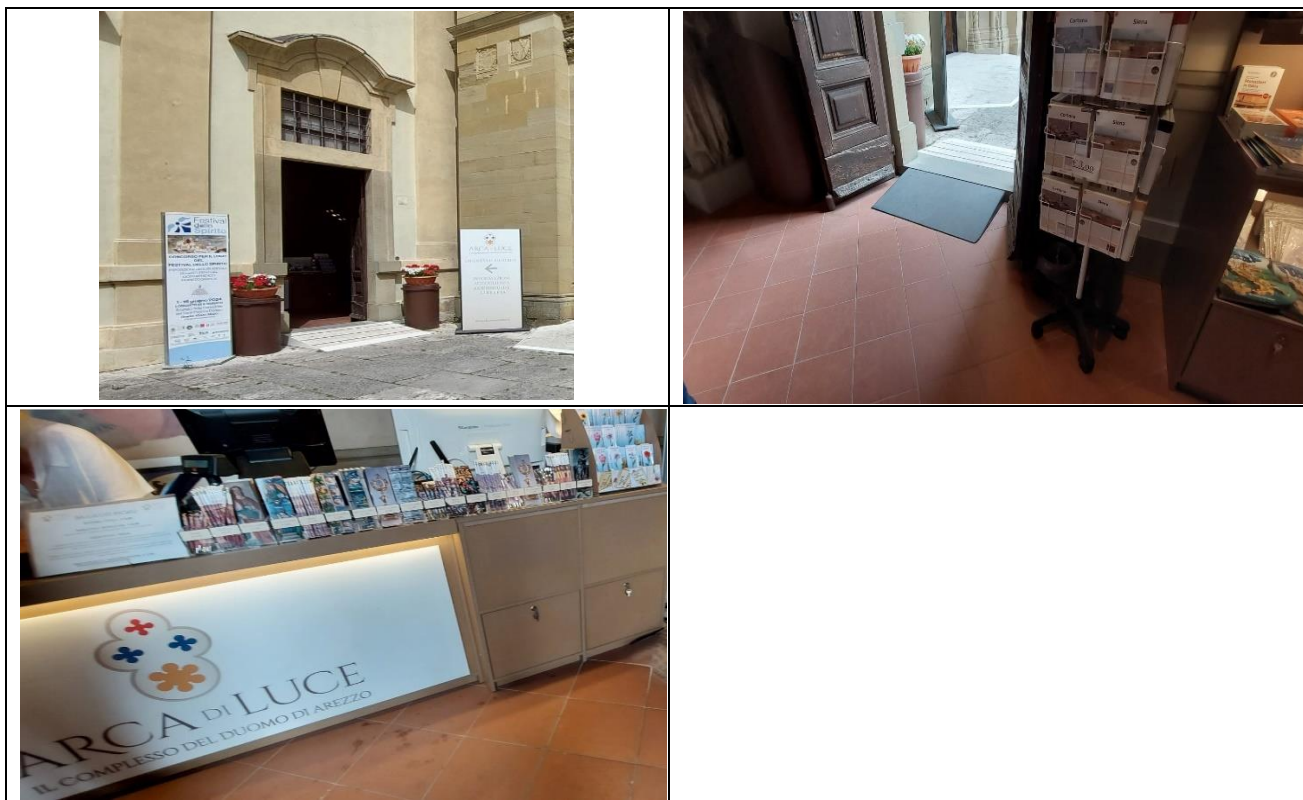


Useful width of door/entrance gate	Above 90 cm
Type of door	with 2 doors that can be opened inwards
Type of handle	lever

Reception

How to access	Via external ramp, length 95 cm, width 120 cm, slope 18% and internal ramp length 60 cm, width 109 cm, slope 16.68%
Priority access for visitors with disabilities	YES
Orientation signs	NO
Type of information material	<input checked="" type="checkbox"/> Audio guides and radio guides Duomo audio guide € 5.00 (on days when the Diocesan Museum is closed) Radio guide € 1.50 per person (mandatory for access to the cathedral for groups of more than 15 pax)
A cloakroom accessible to visitors with motor disabilities is available	NO
Multilingual staff	YES
The staff followed a training course on welcoming people with different disabilities	NO
Presence of sign language interpreters	NO
Reception desk height	90 cm
The following aids are available for visitors with disabilities	<input type="checkbox"/> manual wheelchair <input type="checkbox"/> Crutches <input type="checkbox"/> Magnifier <input type="checkbox"/> Tablet with pre-installed app
Eventual notes	





Itineraries

Presence of maps	NO
Touch indicators and visual-touch maps	NO
Presence of didactic panels	YES
Audio guide	YES
Touch Models	NO
Multimedia workstations accessible from a seated position	NO
Routes dedicated to children	NO
Stopping points	YES
Route spread over several floors	NO
Access to the starting point of the route	flat






	
	
	
Usable width of door/entrance gate/corridor	Above 90 cm
Room Identification	Via information boards





Services

Additional elements

Guided tours for groups	It is possible to request a private guide service by contacting guides licensed by the Tuscany Region (paid service) https://www.regione.toscana.it/-/guide-turistiche-e-ambientali-accompagnatori-turistici-e-guide-alpine
Guided tours for individuals	It is possible to request a private guide service by contacting guides licensed by the Tuscany Region (paid service) https://www.regione.toscana.it/-/guide-turistiche-e-ambientali-accompagnatori-turistici-e-guide-alpine
Activities for children and families	NO
Guided tours with trained staff	<input checked="" type="checkbox"/> for visitors with reduced mobility
Accessible bookshop	<input checked="" type="checkbox"/> via ramp (see reception, reception, ticket office) The bookshop is located outside together with the ticket office
	





Toilets for guests with reduced mobility

Number of accessible toilets for guests with reduced mobility	Not detected
--	--------------

Medical practices/healthcare facilities

Hospitals near the property	San Donato Hospital, Via P.Nenni 20 Phone +39 0575 2551 Emergency Room, via P. Nenni 22 Phone +39 0575 2551
Other healthcare facilities	Dialysis on holiday, at San Donato Hospital, Arezzo – Pernici Maria Grazia, nursing coordinator Hemodialysis Arezzo, Phone +39 0575 255516 Email: mariagrazia.pernici@uslsudest.toscan.it

TESTED BY: [Handy Superabile Social Promotion Association](#) in 2024

